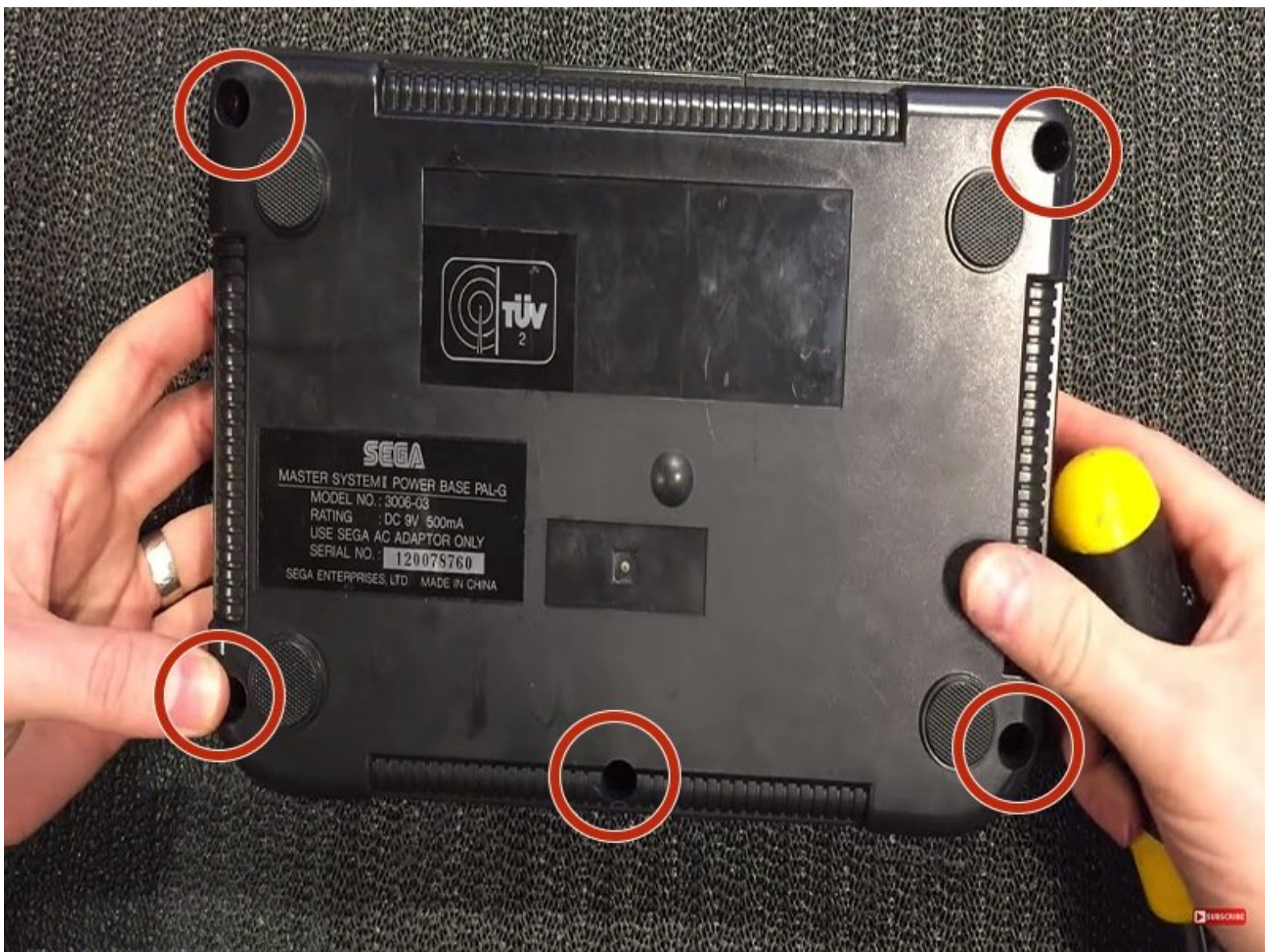




Sega Master System Model 2 Disassembly

Sega, SMS II, Disassembly

Written By: Krisow



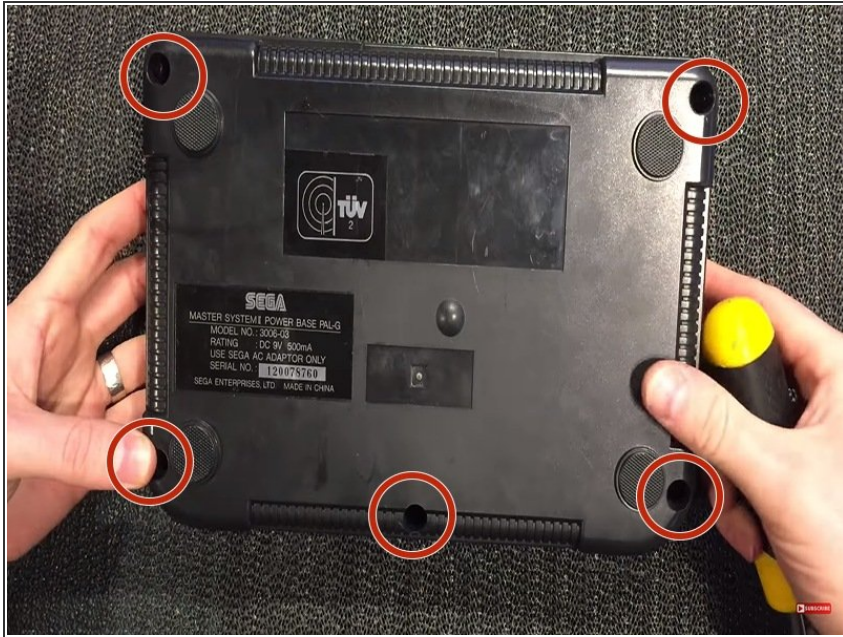
INTRODUCTION

In this guide we disassemble the Sega Master System II

TOOLS:

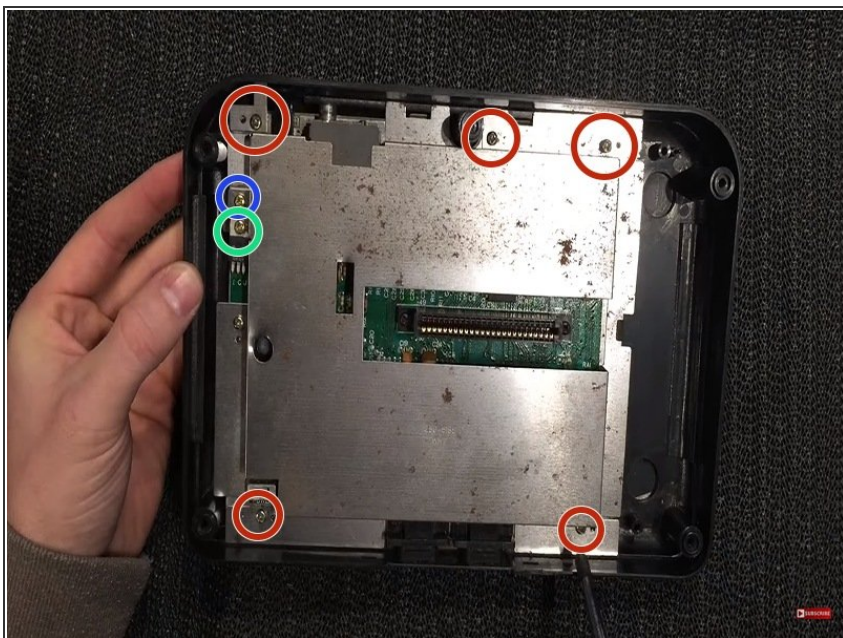
- [Phillips #2 Screwdriver](#) (1)
-

Step 1 — The Case



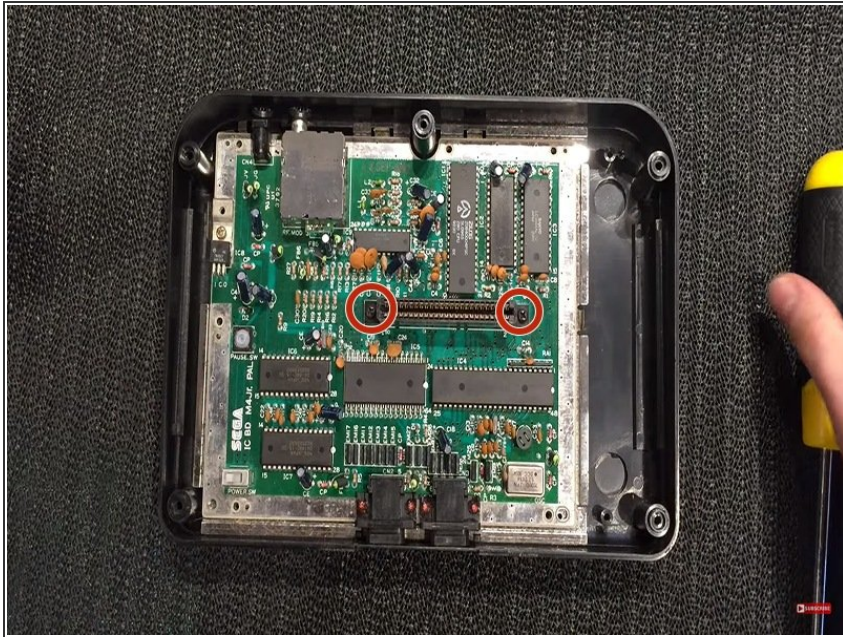
- Take out the 5 screws at the bottom

Step 2 — RF Shield



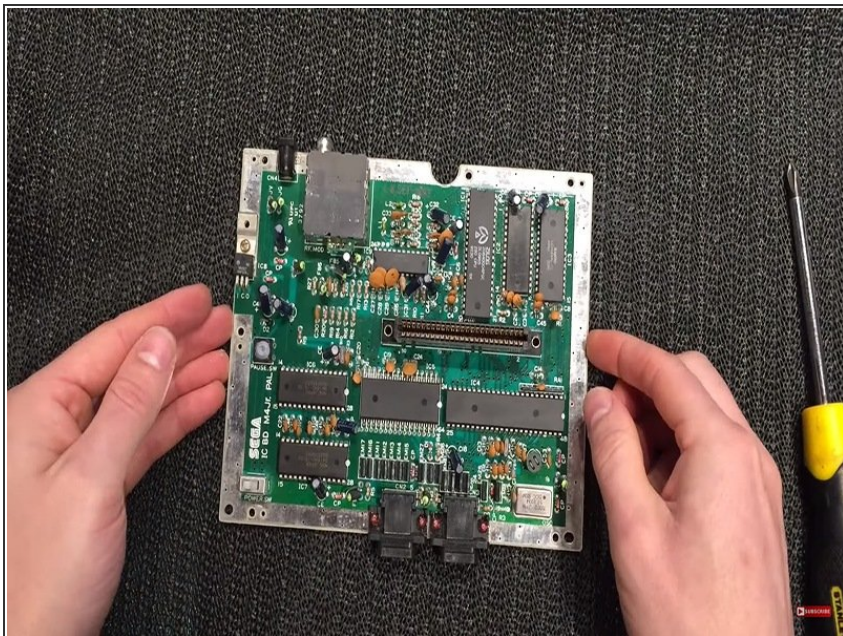
- Remove the 5 screws (3 at the back and 2 on the front)
- Remove the screw at the side (this screw is different than the other 5 so remember to put them away from the other 5 screws since they are similar)
- This screw is for the rf shield under for the voltage regulator under this bigger rf shield, its not needed to remove that screw

Step 3 — Cartridge Slot



- Remove the 2 screws that holding the cartridge slot down

Step 4 — The End



- Congratulations! You have opened your Sega Master System Model 2!

To reassemble your device, follow these instructions in reverse order.

Screenshots taken from a video by Global Garage

