



Motorola MOTO W755 Cell Phone Battery Replacement

This guide shows how to replace the battery.

Written By: C Miller



INTRODUCTION

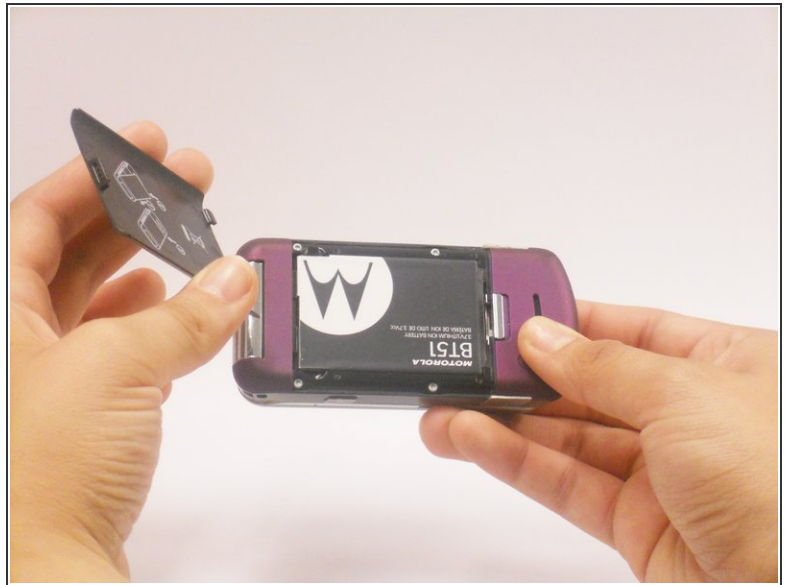
Replace the battery for your Motorola MOTO phone.



PARTS:

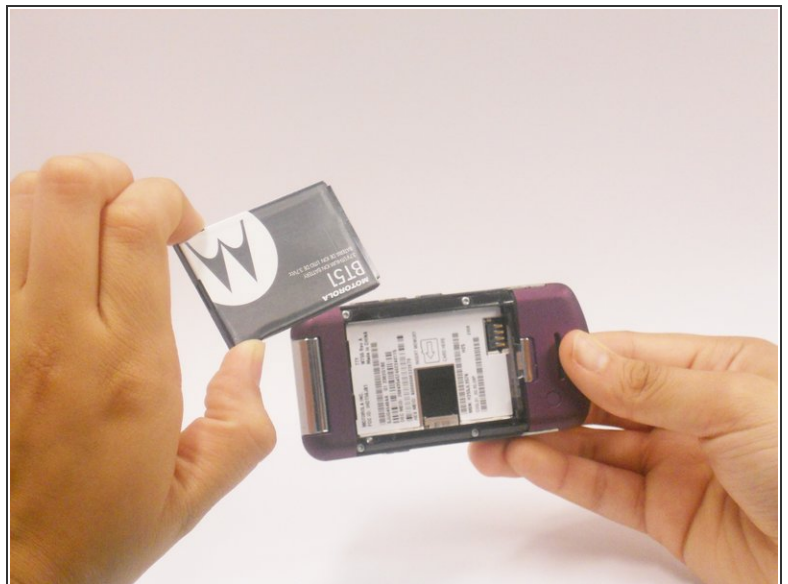
- [Motorola W 755 Battery](#) (1)
-

Step 1 — Battery



- Using your finger, press down on the clip holding the back cover on
- Pull the back cover off.

Step 2



- Place thumb and index finger in the spaces on either side of the battery.
- Pull battery out.

To reassemble your device, follow these instructions in reverse order.

This document was last generated on 2019-08-10 06:36:50 PM.