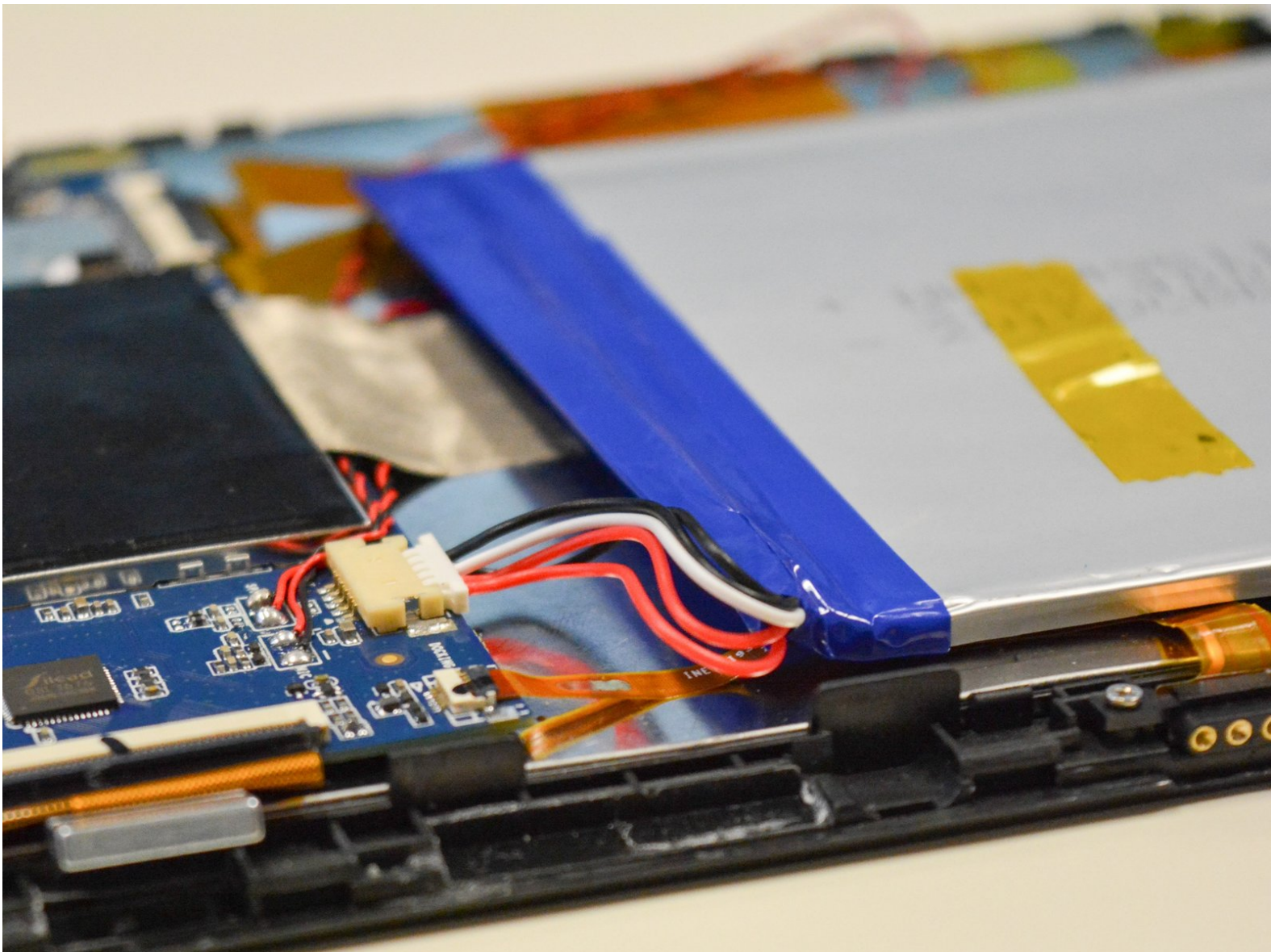




Craig CMP801 Battery Replacement

Use this guide to replace the battery.

Written By: Duyen



INTRODUCTION

Remove the back cover and replace the whole battery.

TOOLS:

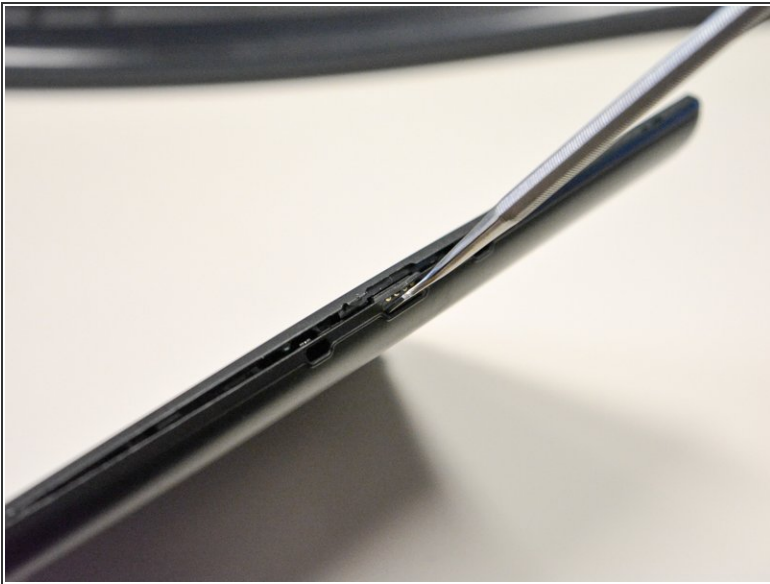
- [Metal Spudger](#) (1)
-

Step 1 — Back Cover



- Locate the opening line between the cover and the device. Then locate the groove near the charging port.

Step 2



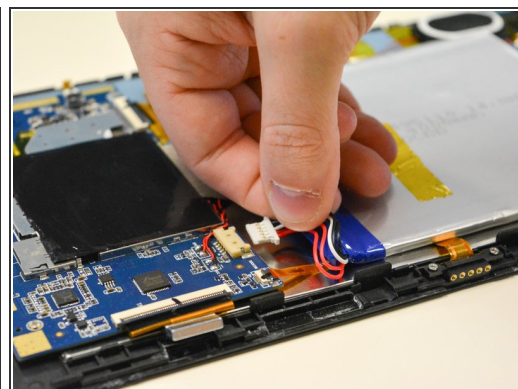
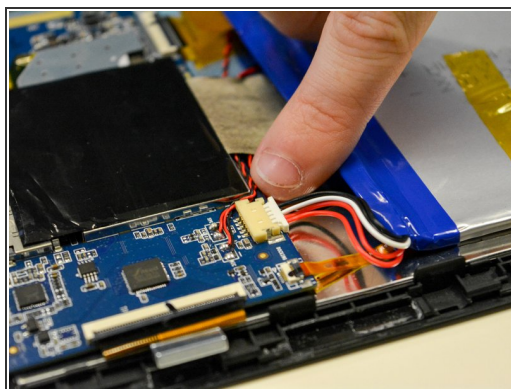
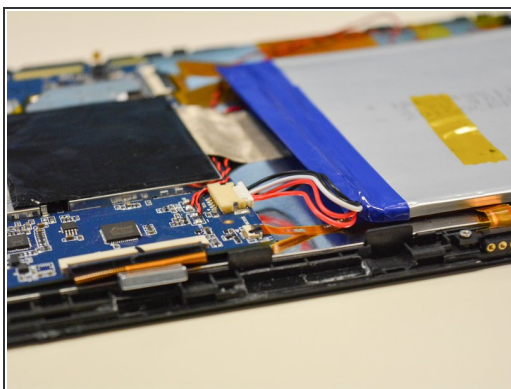
- Use a metal spudger to separate the back cover from the front touch screen.
- To do this, place the metal spudger in between the groove near the charging port of the device to unlatch the first clip.

Step 3




- Continue to separate all of the clips around the device until the back cover comes off completely.

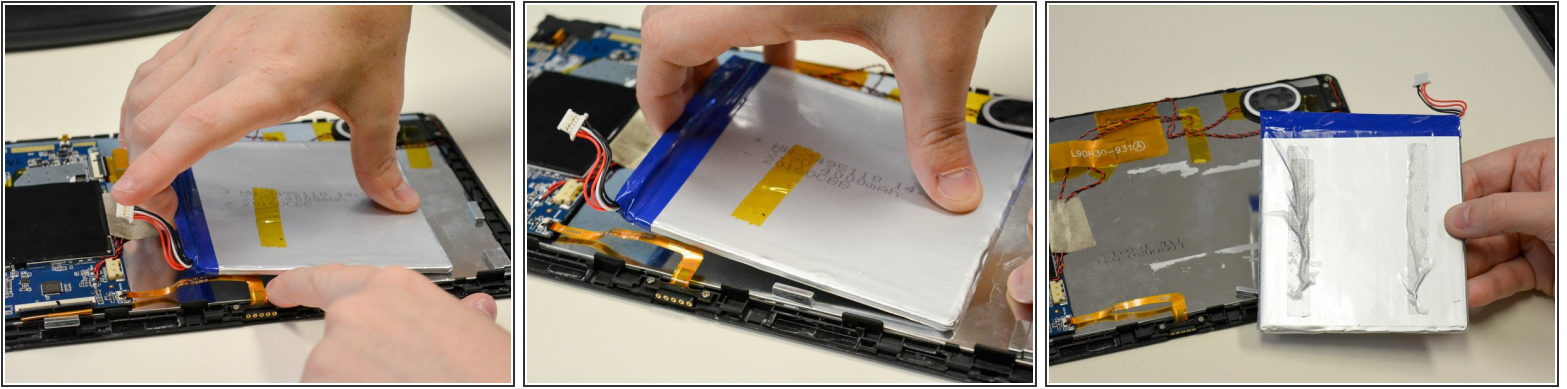
Step 4 — Battery



- Locate the white plug next to the battery.
- Use your fingers to pull off white plug that connected to the battery.

 Be careful not to pull or break the wires on the bottom.

Step 5



- The battery should only be connected to the LCD by adhesive tape.
- Using force, carefully remove the battery while holding the LCD in place.

To reassemble your device, follow these instructions in reverse order.

This document was last generated on 2019-07-15 01:13:59 PM.