



# Trio AXS 3G Back Case Replacement

All the internal components of the device can be accessed by removing the back panel. This guide will show you how to remove the back panel.

Written By: Javoy Ross



---

## INTRODUCTION

The back panel contains the more important components of the tablet such as the speaker, camera, motherboard, and more.

---

### TOOLS:

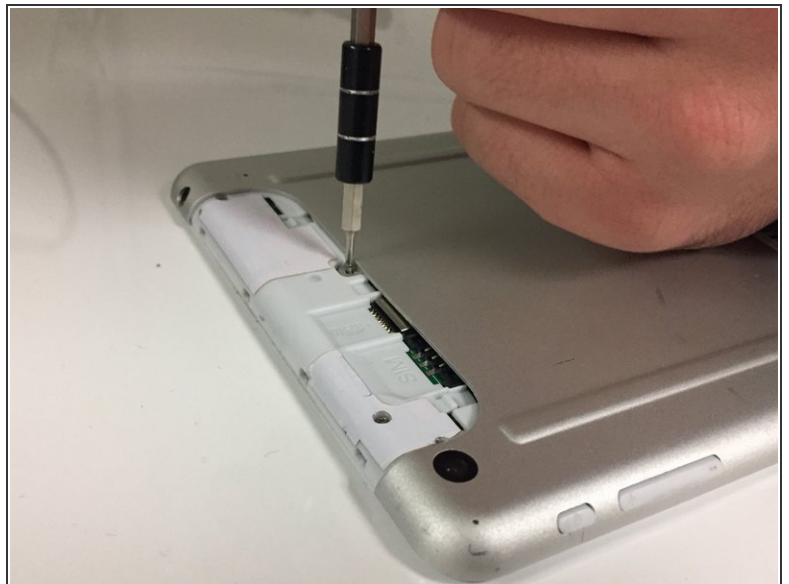
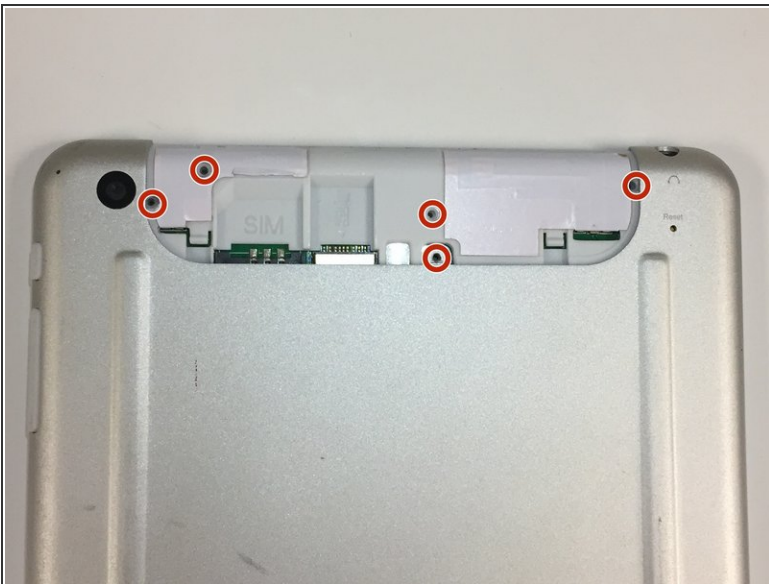
- [Phillips #000 Screwdriver](#) (1)
  - [iFixit Opening Tools](#) (1)
-

## Step 1 — Back Case



- ⓘ On the back of the device there is a white SD card case that shelters the screws that attach the back panel to the tablet.
- Use your thumbs to slide up and off the small SD card case.

## Step 2



- Using the Phillips Head #000, unscrew the 5 4mm and 3mm screws at the top.

### Step 3



- Insert a plastic opening tool between the back panel and the front of the tablet, and gently pry it away from the tablet.
- ⚠ Do not pry too hard as the screen is fragile and might crack.
- ⓘ It is best to start at the bottom of the tablet when prying the back panel off.
- ⓘ The volume piece will also dislodge when the back panel is removed.

To reassemble your device, follow these instructions in reverse order.