



How to Remove a SIM from Samsung Galaxy S7, if inserted without tray

This guide will teach a user how to remove a SIM card from the Sim reader, if they inserted the card, without putting it in the Tray.

Written By: Scott



INTRODUCTION

I am a technician who previously worked for samsung. I have seen many people asking about improper sim extraction, and this is the way samsung technicians do the procedure in canada. This procedure is much longer than shoving something in, and trying to pry the sim card out, but it is a guaranteed fix, while being less susceptible to damaging the device. it is the professional way to do the repair

TOOLS:

- [Heavy-Duty Suction Cups \(Pair\)](#) (1)
 - [Phillips #00 Screwdriver](#) (1)
 - [1.8 X 40 Slot Screwdriver](#) (1)
 - [Spudger](#) (1)
 - [Hot Air Rework Station Hakko FR-810](#) (1)
-

Step 1 — Remove Back Glass



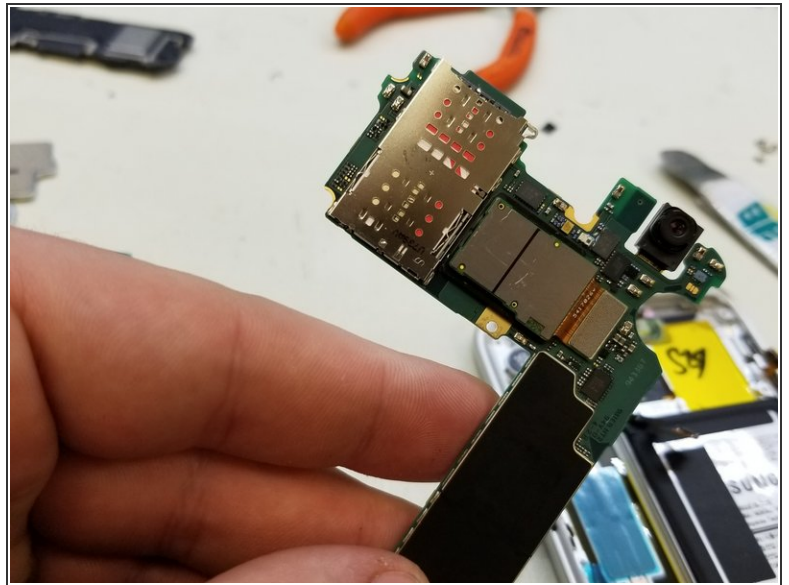
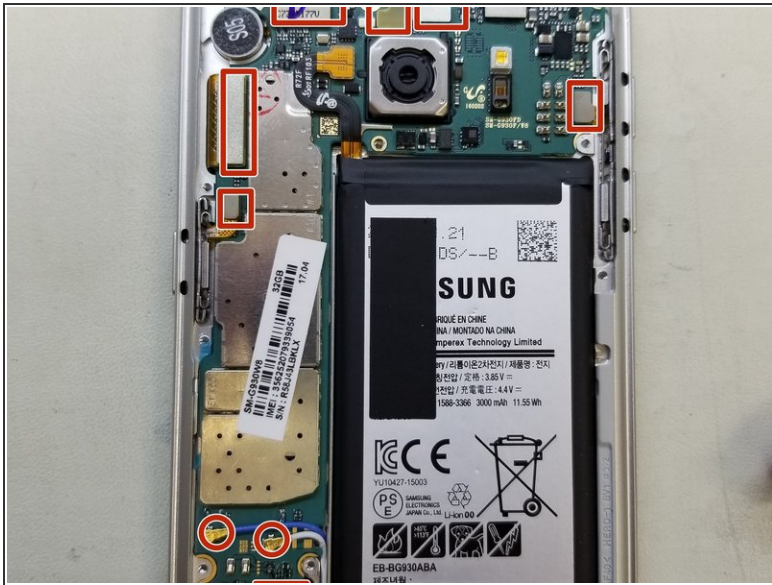
- Set your hot air gun to your adhesive melting temperature. (I use 250)
- heat up the four sides of the back glass to a decent temperature.
- use a suction cup to apply upwards pressure. this begins to lift the glass when warm.
- apply Ethyl Alcohol (99%) to the seam, to help break down the adhesive.

Step 2 — Remove Housing Panels



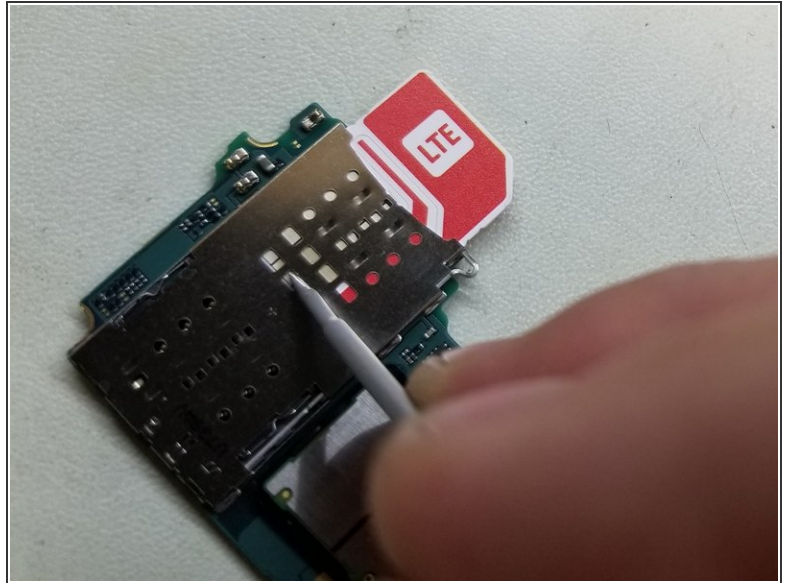
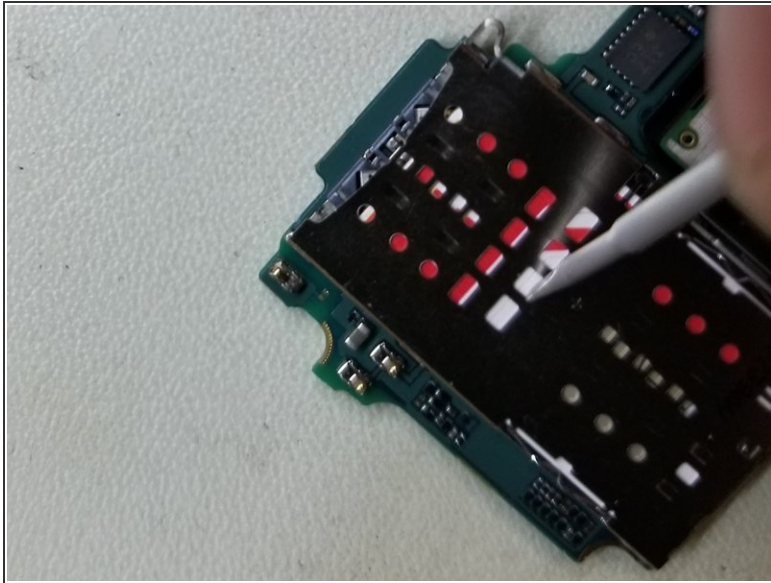
- Once the back glass is removed, Begin removing the screws from the three housing panels
- After removing all of the screws, the panels are clipped into the frame. A little bit of pressure with a spudger/pick will remove them with ease
- remove the three panels to gain full acces to the motherboard.

Step 3 — Remove Motherboard from frame



- The SIM tray is located on the other side of the motherboard.
- In order to get there, lift all of the connectors attached to the board. (Camera, Screen, Power button, Network Coaxials, Fingerprint Sensor, Earspeaker, Prox/Light Sensors, Volume Buttons)
- When Lifting board, be sure to lift at the top, as the Charge port is connected at the bottom. As you lift the board out, disconnect the Charge flex

Step 4 — Remove Card from Reader



- Use small Slot Screwdriver, to access openings in reader, and slowly glide sim outwards.
- Get the sim card out enough to comfortably grab hold, and remove sim from device.
- while using metal tools to operate on board, be sure there is no power to board, Destatic each tool, and BE GENTLE

Step 5 — Reassemble Device



- Follow the steps backwards to reassemble the device
- you may encounter a situation where replacement adhesive is needed to re-apply the back housing

To reassemble your device, follow these instructions in reverse order.

This document was last generated on 2019-08-25 11:53:30 AM.