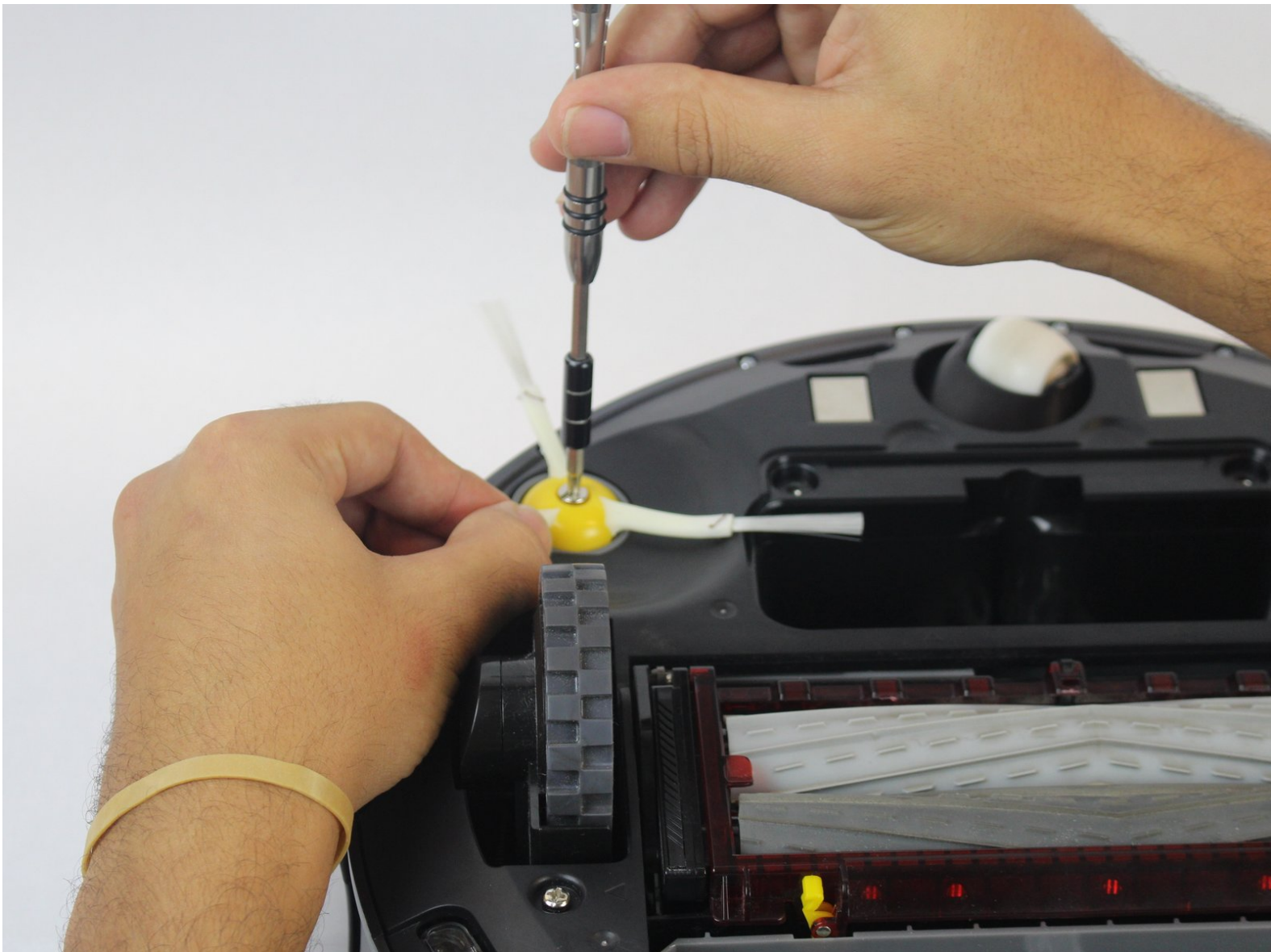




# iRobot Roomba 980 Rear Wheels

This guide will take you step-by-step to replace the rear wheels on the Roomba vacuum.

Written By: Ernesto Rodriguez Romero



---

## INTRODUCTION

The rear wheel assembly is what propels the roomba. If they become damaged the roomba will begin to move irregularly or not at all.

---

### TOOLS:

- [Phillips #1 Screwdriver](#) (1)
-

## Step 1 — Battery



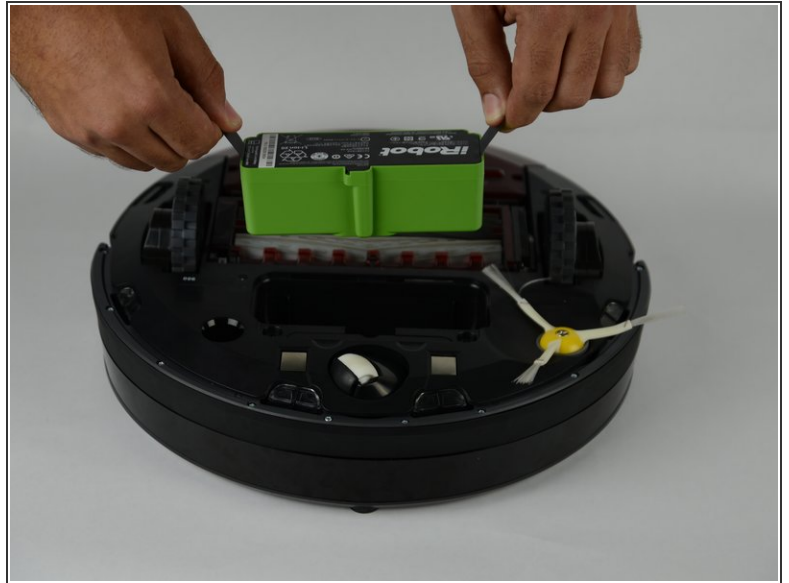
- Flip over the device and remove the (2) 11.5mm screws using the Phillips #1 screwdriver.

## Step 2



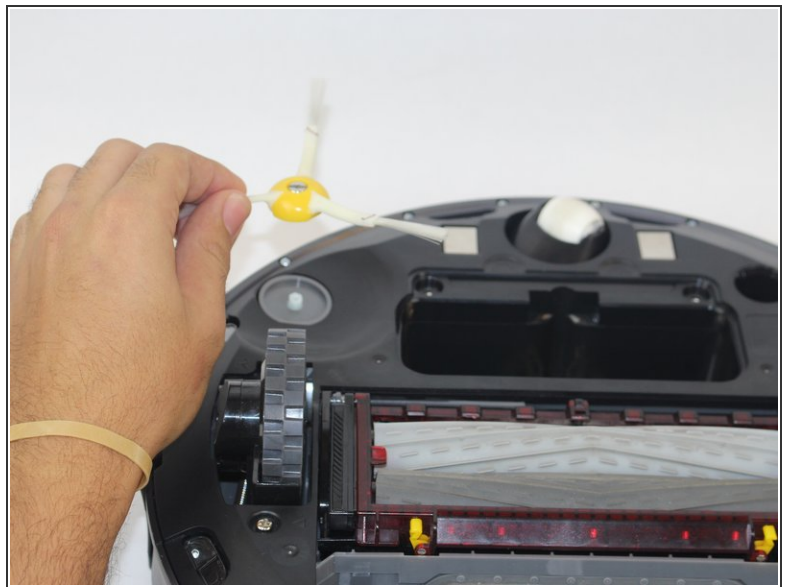
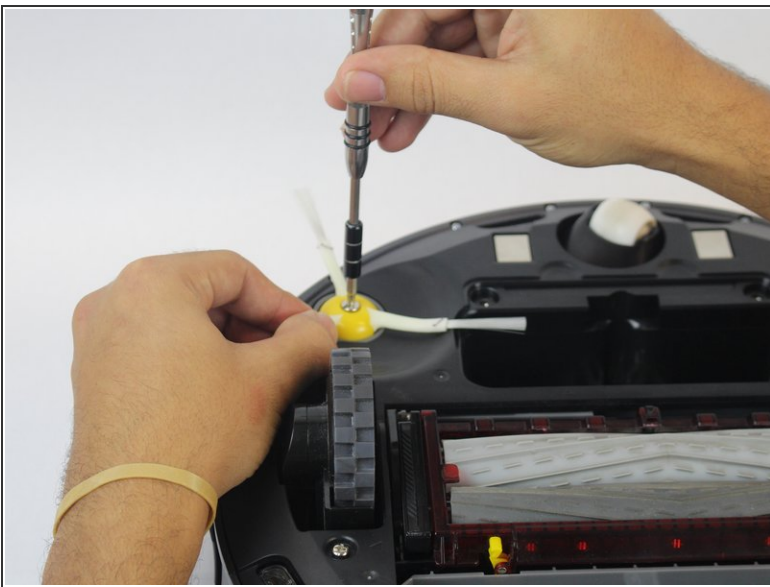
- Unscrew the back plate using a Phillips#1 head screwdriver.
- Carefully lift the panel up once the screws are removed.

### Step 3



- With both hands, grab the 2 black tabs on each ends of the battery.
- Pull the tabs upwards to remove the battery.

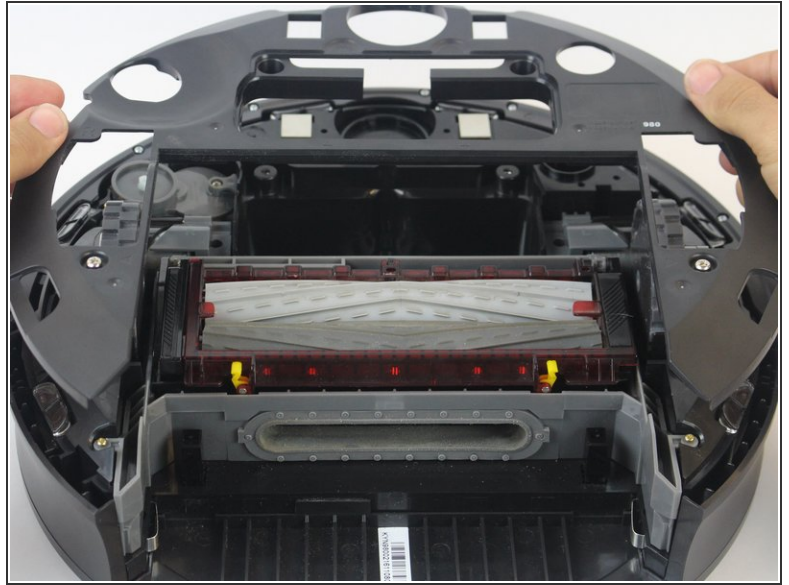
### Step 4 — Rear Wheels



- Loosen the screw on the side brush.
- Lift the side brush from the device.

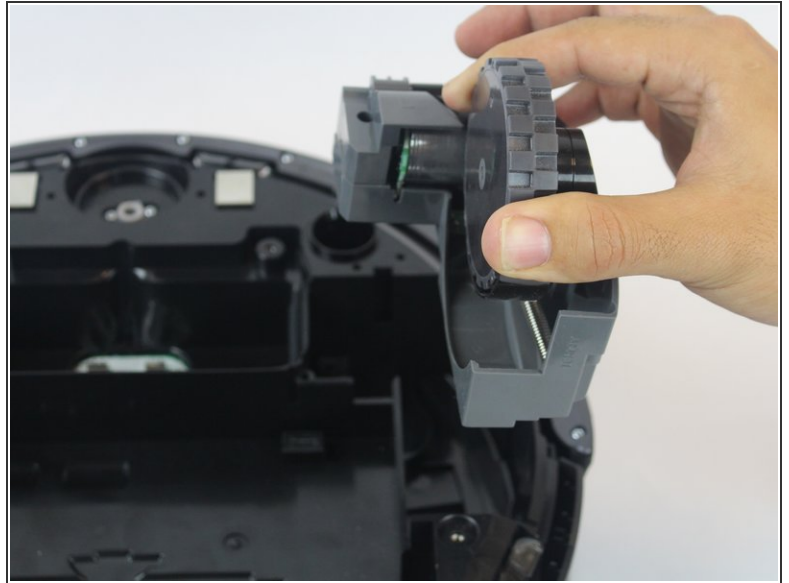
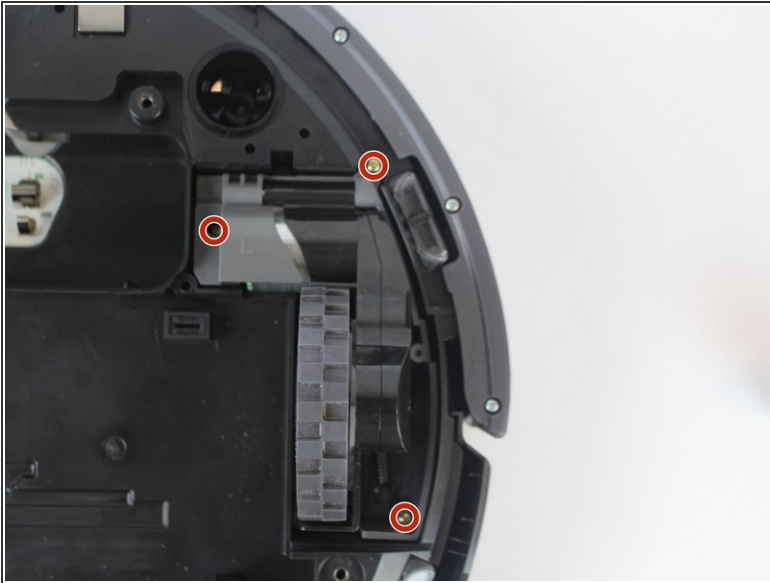


## Step 5



- Unscrew the (2) 11.5mm screws using the Phillips #1 screwdriver.
- Carefully remove the plate by lifting it off of the device.

## Step 6



**i** Removing the brush module may ease the removal of the wheel module

- Locate the (3) 15.8mm gold Phillips #1 screws and unscrew them.
- Lift the wheel module removing it from the vacuum.
- Remove the other wheel by repeating these steps.

To reassemble your device, follow these instructions in reverse order.